



## FOR TIPPING BAGS AND SECURE YOUR RAW MATERIALS

- GUARANTEE NO FOREIGN BODY\*
- A MAXIMUM GRANULOMETRY SIZE
- BEFORE THE USE OF RAW MATERIAL

Ultra-compact design, to empty bags on the ground (without step or walkway) with enough hopper capacity .



For tipping bags model T and V Ø800 mm

For existing or new stations

Easy access and dismantling of sieve with secured version with or without articulated hood

Mesh 3 mm (others\*\* in option)

Atex 22 (21 in option)

Ex. products : flour, sugar, starch, milk powder...

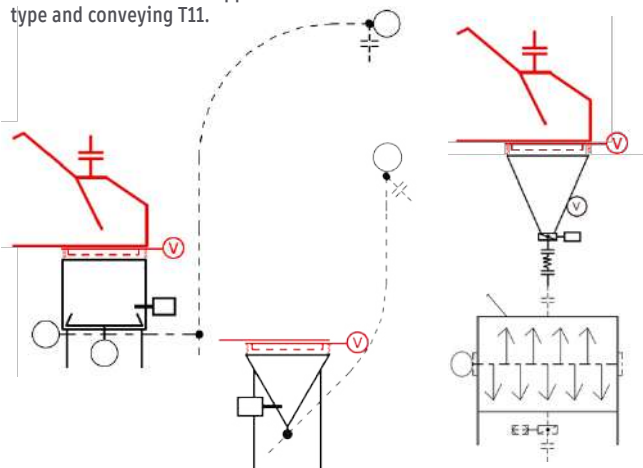
Version avec hotte sur vides-sacs type T non fourni.

\*Foreign body with higher granulometry size than the installed mesh grid

\*\*The choice for the grid impacts directly the maximum output, which reduces as thinner is the grid

### SKETCH EXAMPLES

Version hood with V hopper type and conveying T11.



Version tablet with hopper T type and conveying T14.

Version hood on hopper for mixer charging.

### SECURITY

- Guarantee de food safety by stopping the foreign bodies\*
- Protects the operators : electrical security detecting the grid position
- Reduces penibility : charging at a perfect height with limited dust contamination

### HYGIENE

- Easy access for cleaning thanks to the articulation and grid removal
- Conforming Food quality exigences

### PRODUCTIVITY

- In-line sieving before process introduction
- Reduces production stops
- No product wastes due to non conformity of foreign bodies
- Easy implantation in existing lines

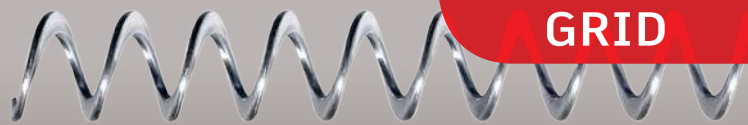


# DESCRIPTION

## VIBRATING SECURITY GRID

Ref :  
In option with new tipping bag  
Delivered for existing line

Tablet	Hood
CHA060C	CHH060C
CHA061C	CHH061C



### VIBRATING SUPPORT

- 1- Adjustable vibrating support grid.
- 2- Vibrator 230/400V tri - 50Hz - IP 55 - Atex22.
- 3- Flexible hygienic pipe with counter flanges for hermetical seal between sieve and hopper.
- 4- 3 vibrating compensators.

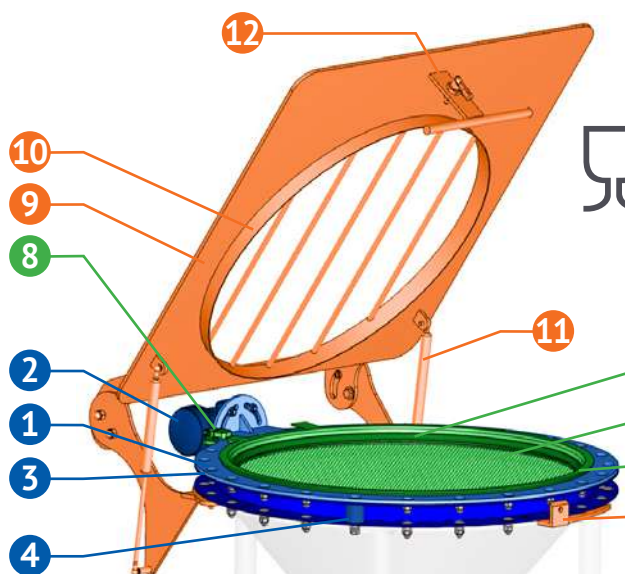
Blue seal, Food grade CE 1935/2004. Construction  
Stainless steel 304 (316L on demand).

### SIEVE Ø750 MM REMOVABLE, MAGNETIC STAINLESS STEEL 430

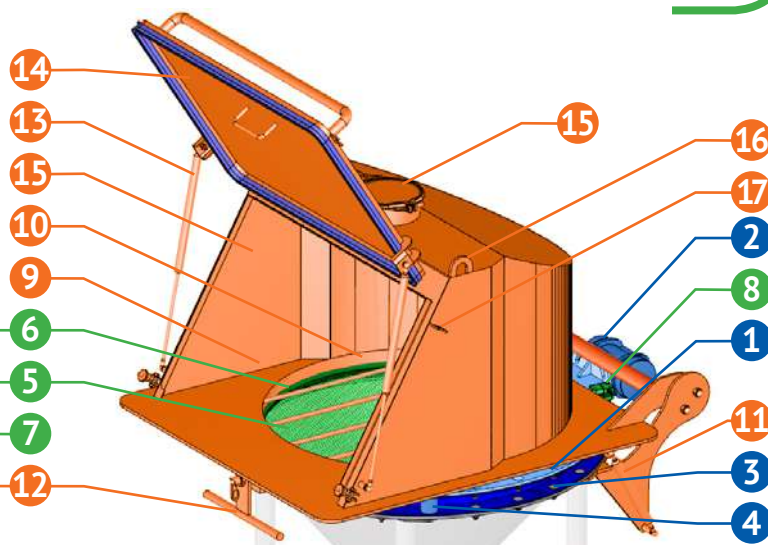
- 5- Mesh 3 mm (other in option\*) stuck on the frame for easy cleaning and limiting residual areas.
- 6- O-Ring for sealing between tablet and sieve.
- 7- O-Ring for sealing between sieve and vibrating support.
- 8- Electrical security or sieve position detection.

Seals and stick are CE 1935/2004 Food grade quality.

\* The mesh size impacts the reachable output. Thinner mesh = lower output



Platform tablet, opening position (maintenance)



Hood version, closed position

### ARTICULATED PLATFORM

9- Articulated supporting bag platform . Following version : with dedusting hood welded on the platform.

- 10- Bag supporting and protection of the sieve
- 11- 2 cylinders for articulation assistance and to maintain in the open position.
- 12- Lockable in closed position

Version with hood :

- 13- 2 cylinders to maintain in open position when charging.
- 14- Charging door with 2 handfl (int. and ext.) with hermetical seal.
- 15- Plug Ø150 mm with U-shaped seal (for global dust collection coupling), closed with plate collar and seal.
- 16- Handling rings.
- 17- Detection support of opening door pfor auto run of the dedusting unit (detector in option ).

Construction stainless steel 304 (316L on demand). Food grade seals CE1935/2004.

### OPTIONS

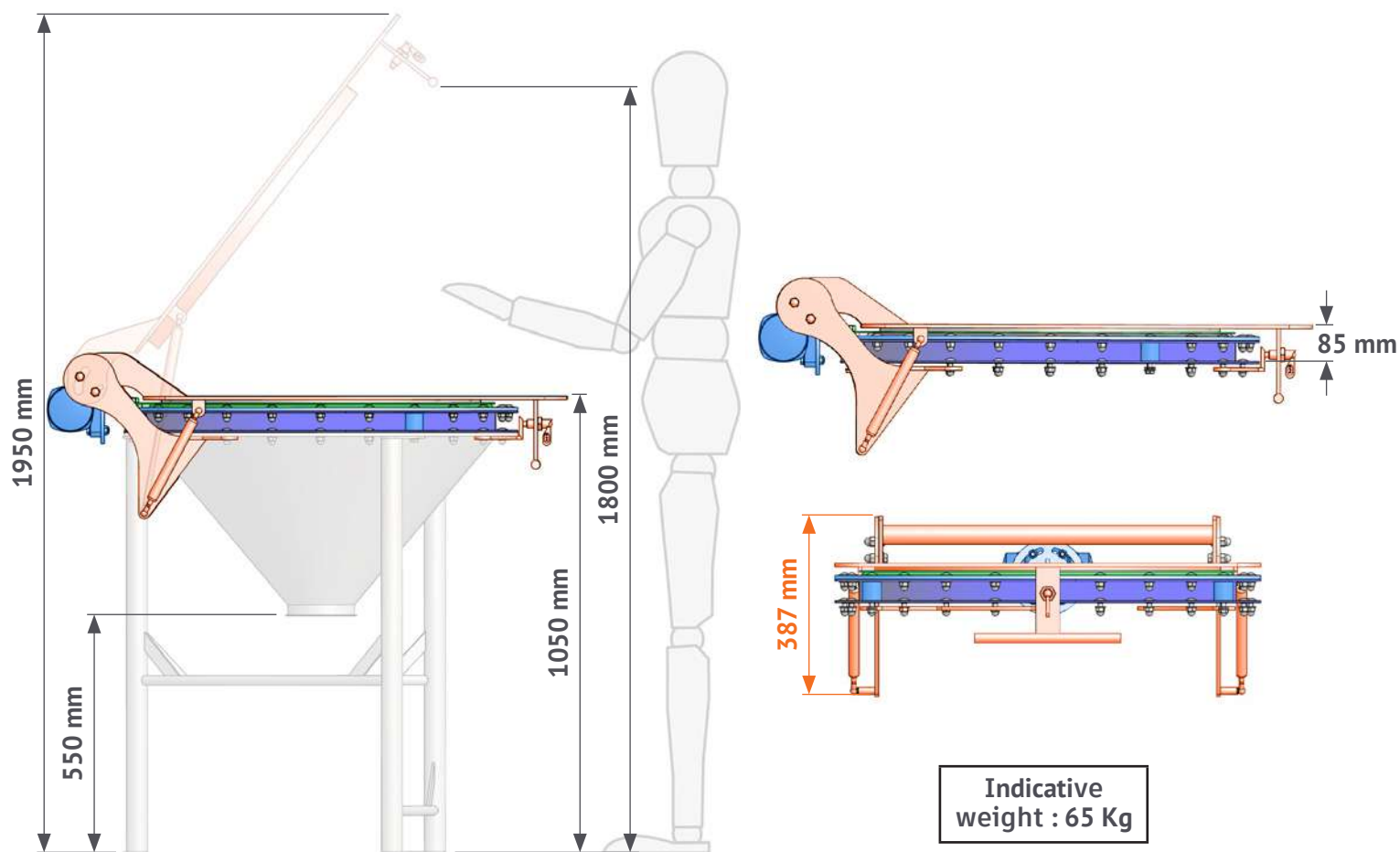
- VE006A · Vibrator (2) all stainless steel no Atex (Atex on demand)
- Other sieve mesh (5) : • TTA002C mesh 2 mm | • TTA004C : mesh 4 mm
- Complementary sieves (5) : • TTA002A mesh 2 mm | • TTA003A : mesh 3 mm | • TTA004A : mesh 4 mm
- TK125C · No security on sieve (8)
- TK126C · Electrical security to detect the hood or platform position
- TA025C · Filtration textil instead of closing plate (15)
- DDI010C · Open door detection on hood (14) in case of coupling to a centralized dedusting
- Certification Atex21 on demand



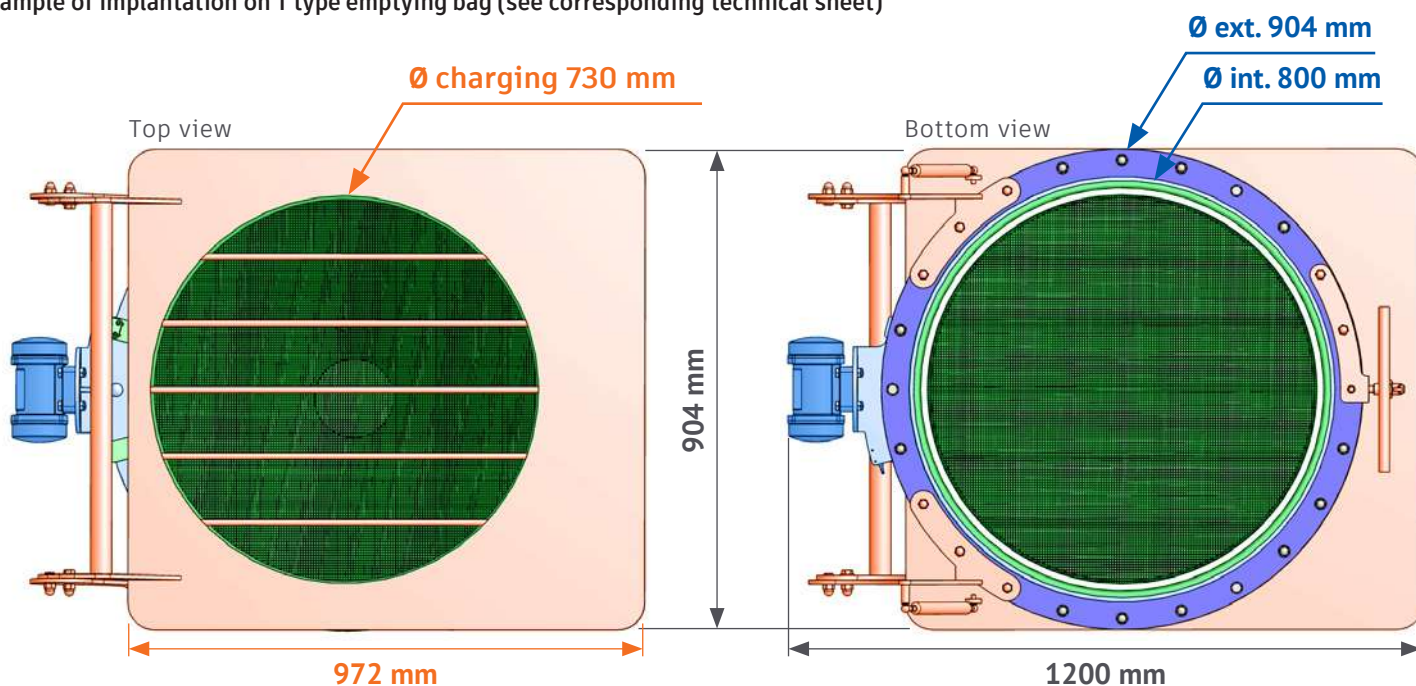
# INDICATIVE DIMENSIONING

## Platform version

VIBRATING  
SECURITY  
GRID



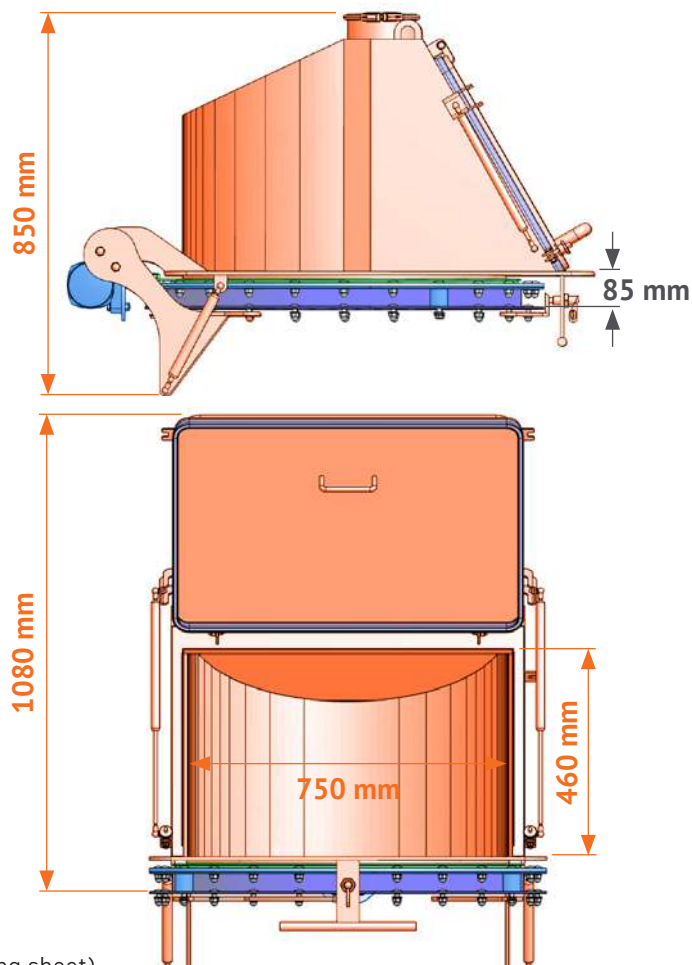
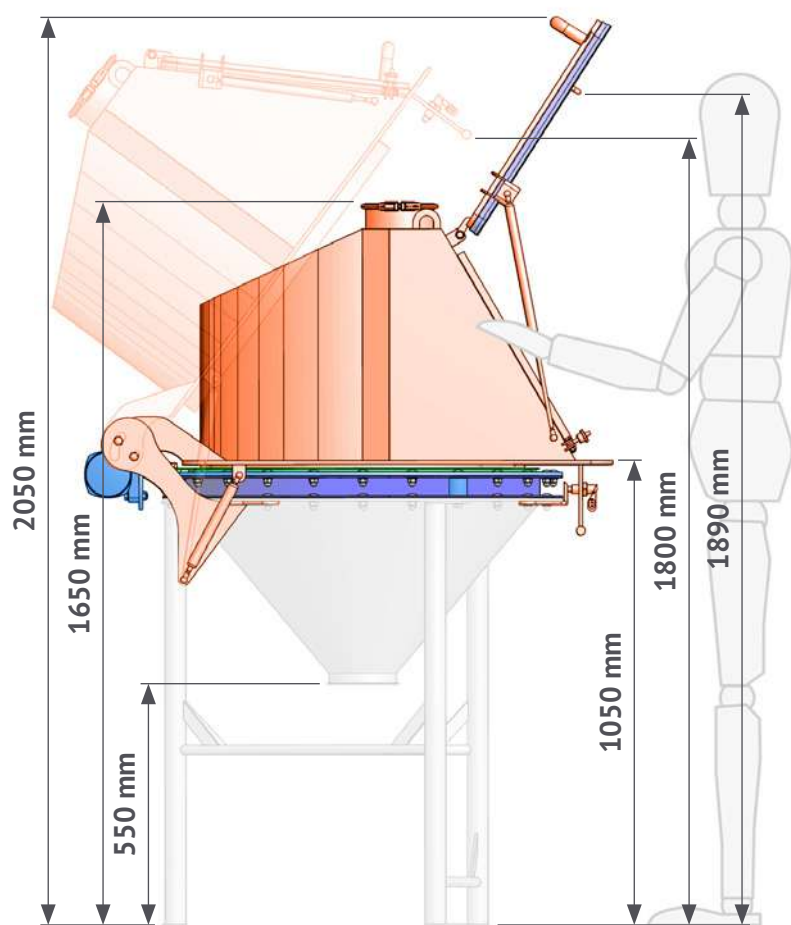
Example of implantation on T type emptying bag (see corresponding technical sheet)



# INDICATIVE DIMENSIONING

## Hood version

**VIBRATING  
SECURITY  
GRID**



Example of implantation on emptying bags T type (see technical corresponding sheet)

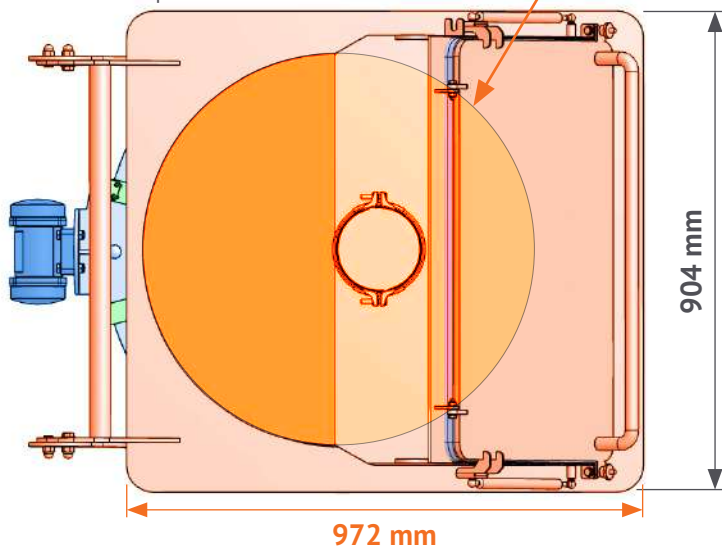
Indicative  
weight : 95 Kg

Ø charging 730 mm

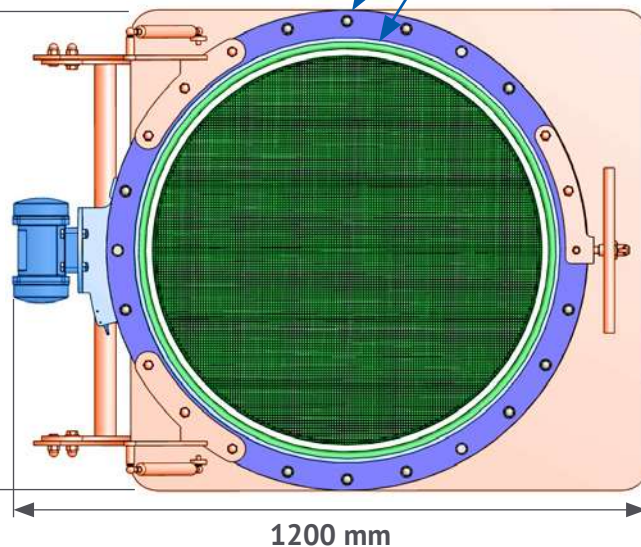
Ø ext. 904 mm

Ø int. 800 mm

Top view



Bottom view



34 rue de la croix de fer - iX CAMPUS  
78100 Saint Germain en Laye - France  
Phone +33 184 730 939 - [contact@transitube.com](mailto:contact@transitube.com)







34 rue de la croix de fer - iX CAMPUS  
78100 Saint Germain en Laye - France  
Phone +33 184 730 939 - [contact@transitube.com](mailto:contact@transitube.com)

